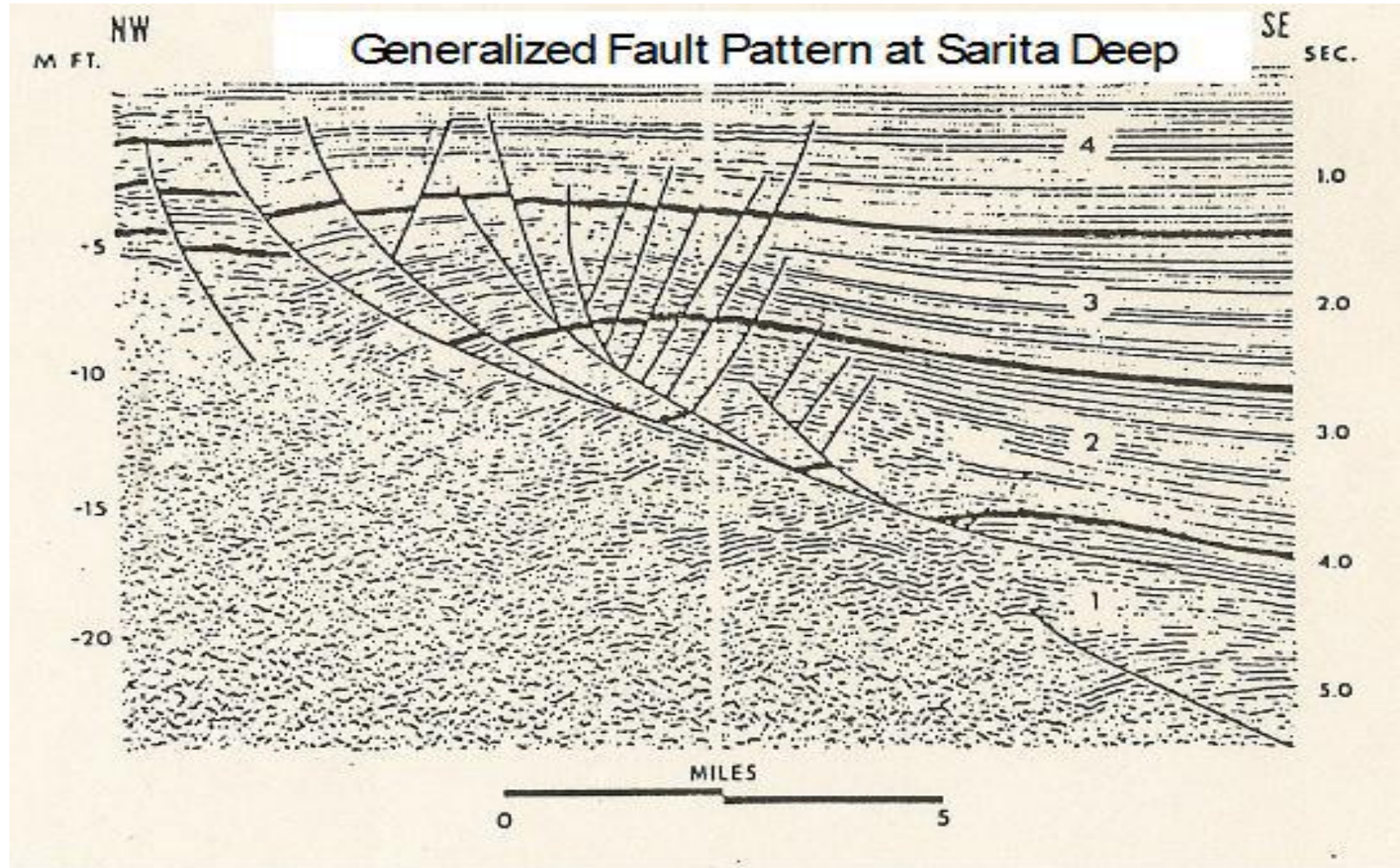


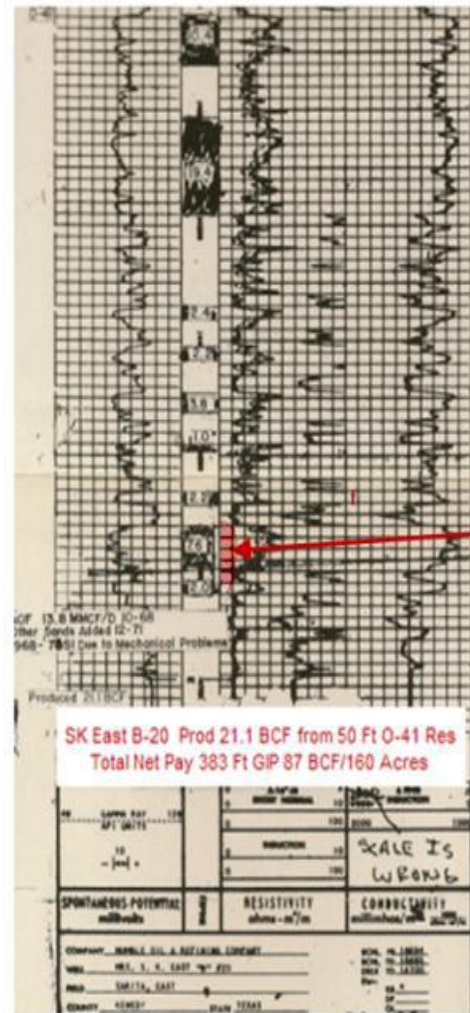
Chapter 10 Case Studies of an Independent Consultant

Typical Down to the Coast Growth Fault Seismic Section



Depositional thickening as a result of contemporaneous growth faulting (From Bruce 1973)

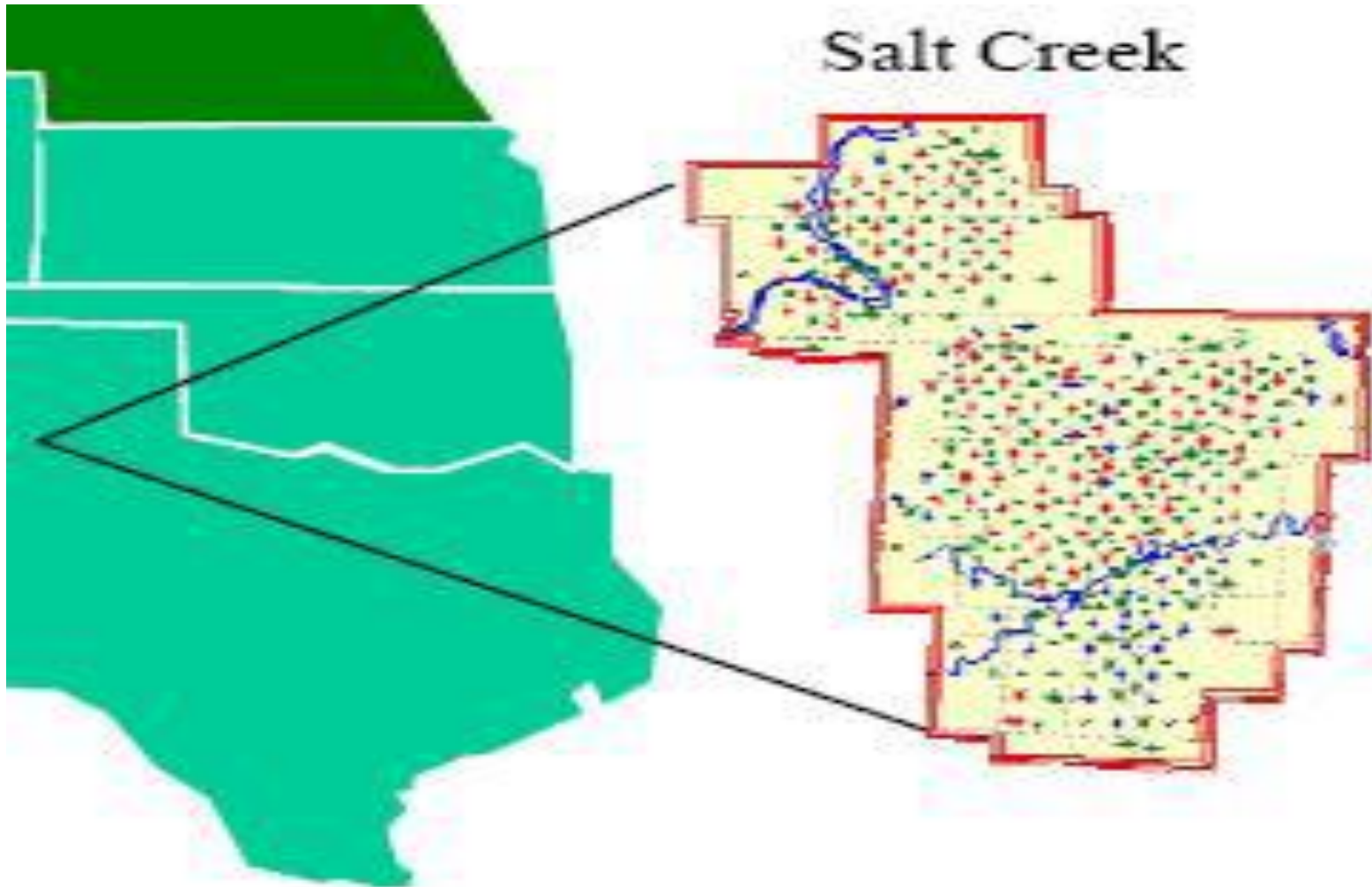
Electric Log of Lower Part of S K East B-20



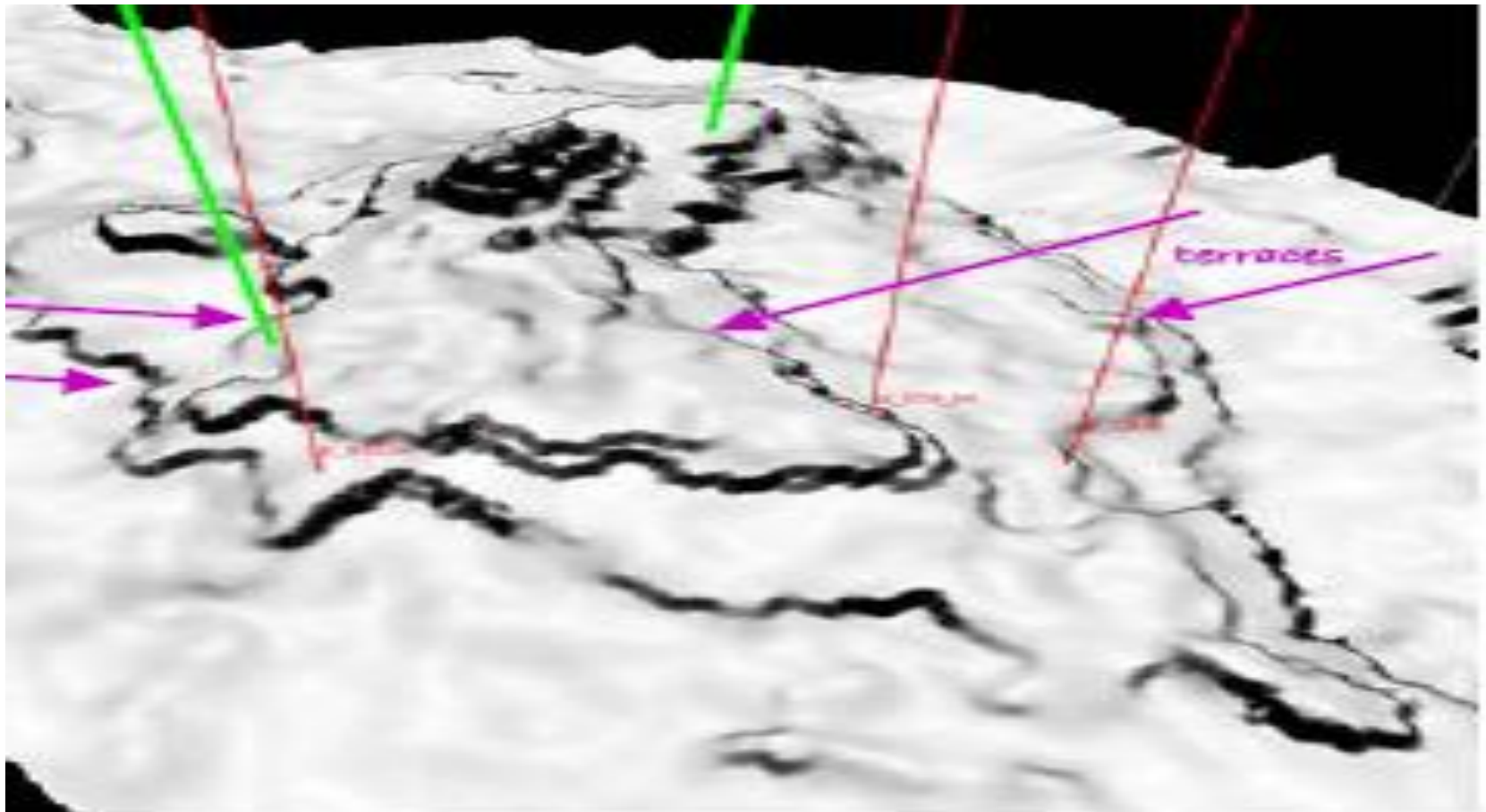
Exxon's 50 Ft of Perforations

Produced 1968-1978

Location of the Salt Creek Field

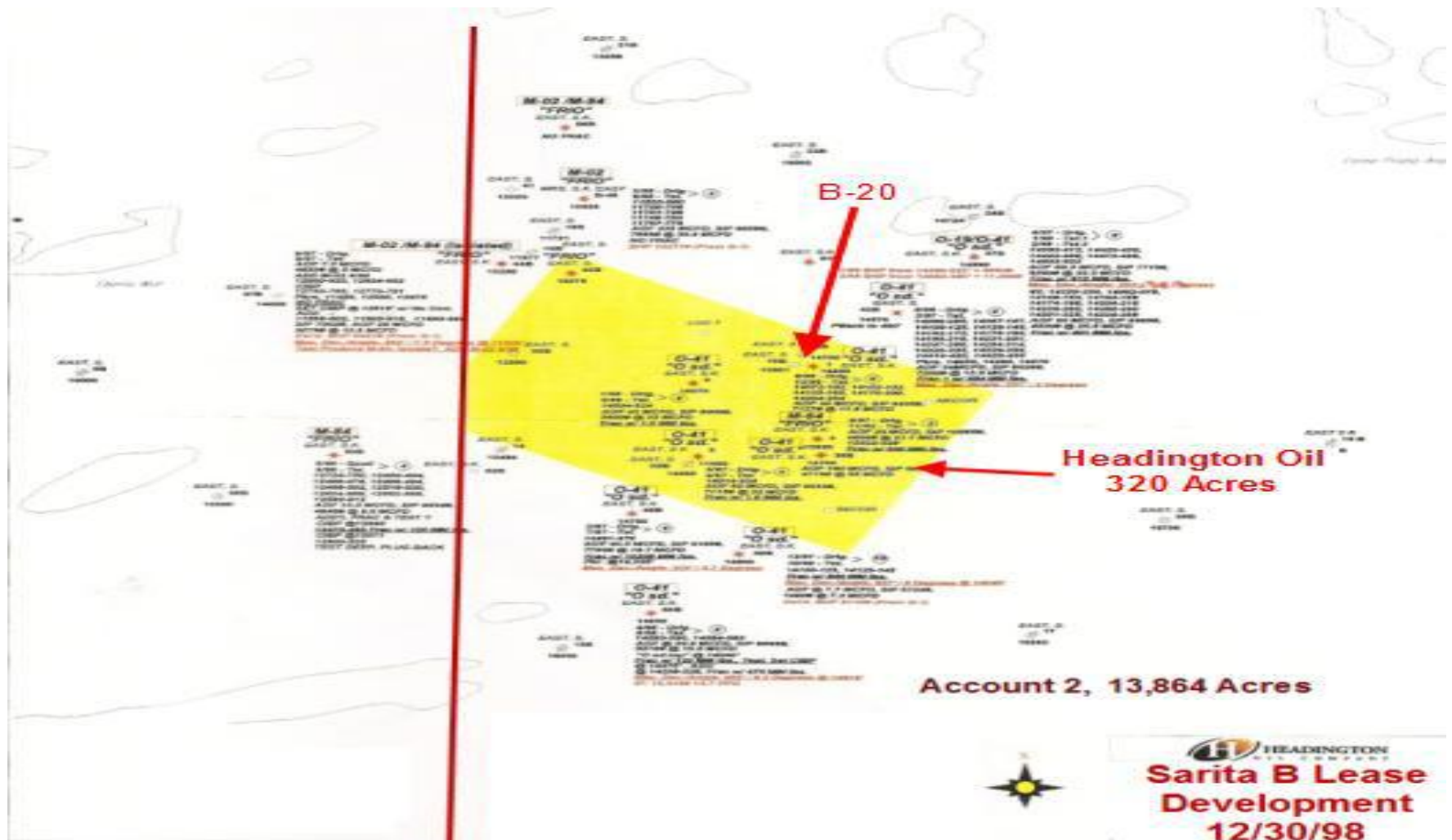


Three-D Structure of the Salt Creek Field.



Salt Creek 3-D Dual Buildup.

Location of the Headington 320 Tract Purchased from Exxon.



Drilling location Hedington East # 1 200 ft Offset to Mrs. S K. East B-20

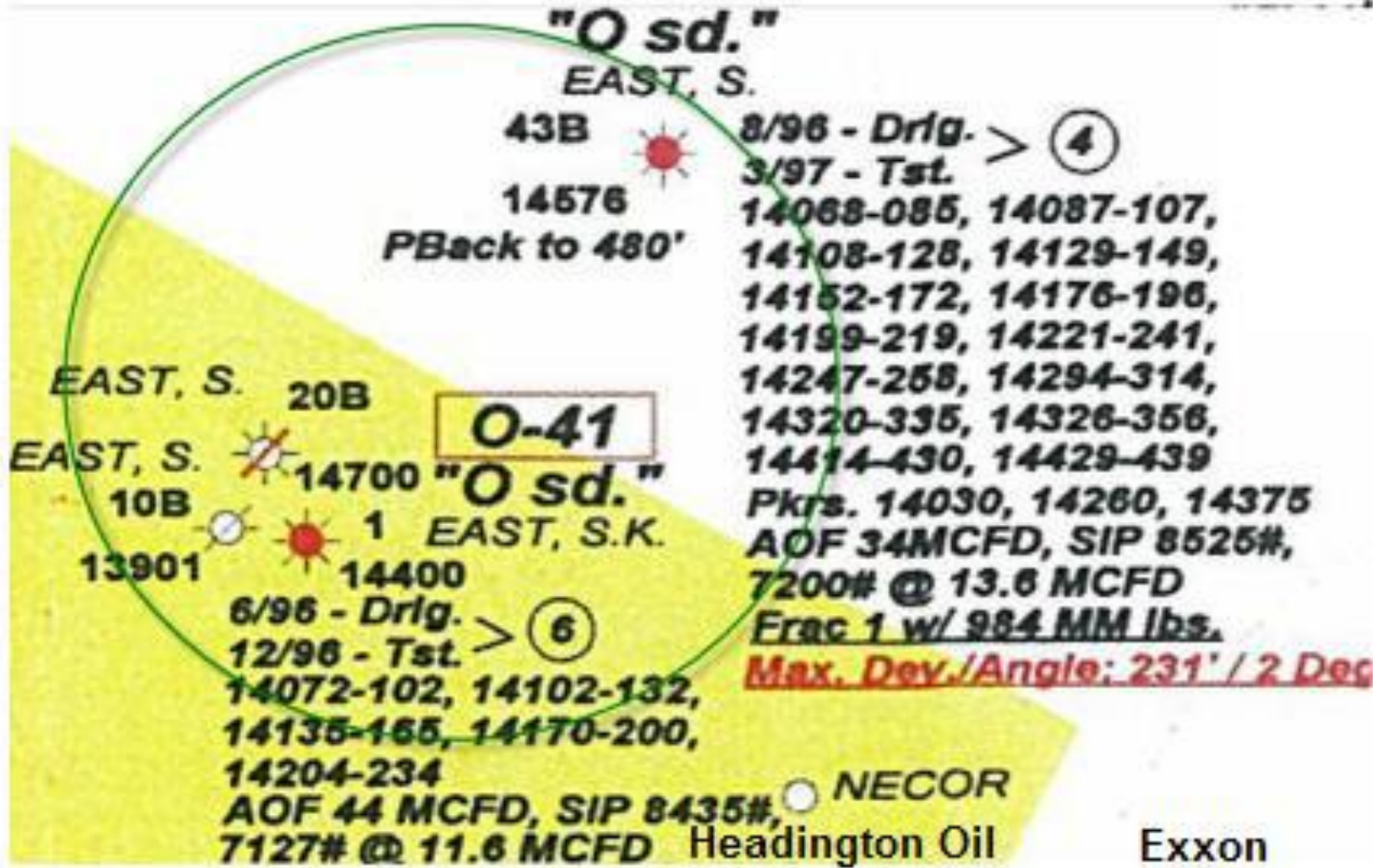


Fig. 10-25 Production build-up for the East Seven Sisters field, Duval County, Texas

